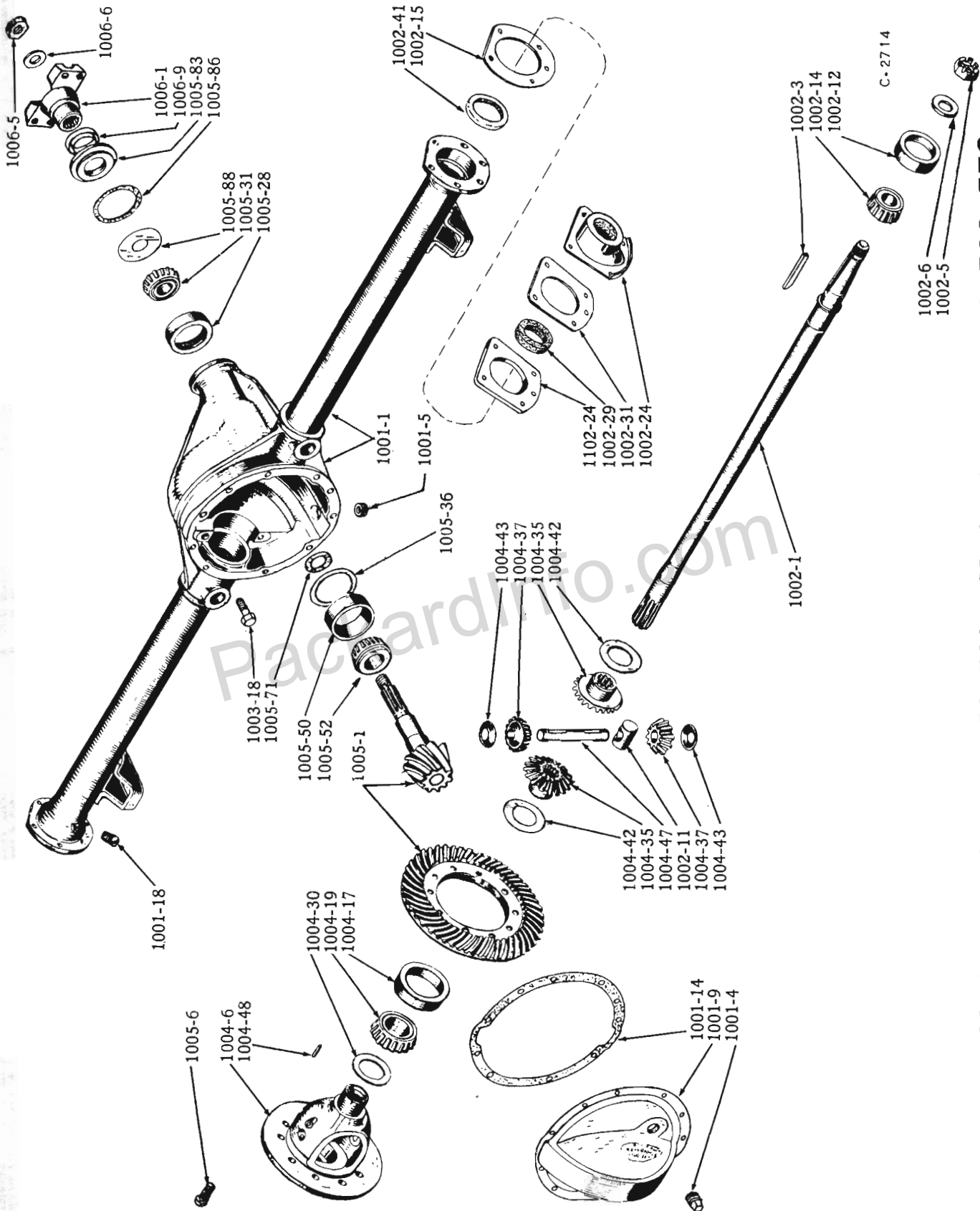


REAR AXLE

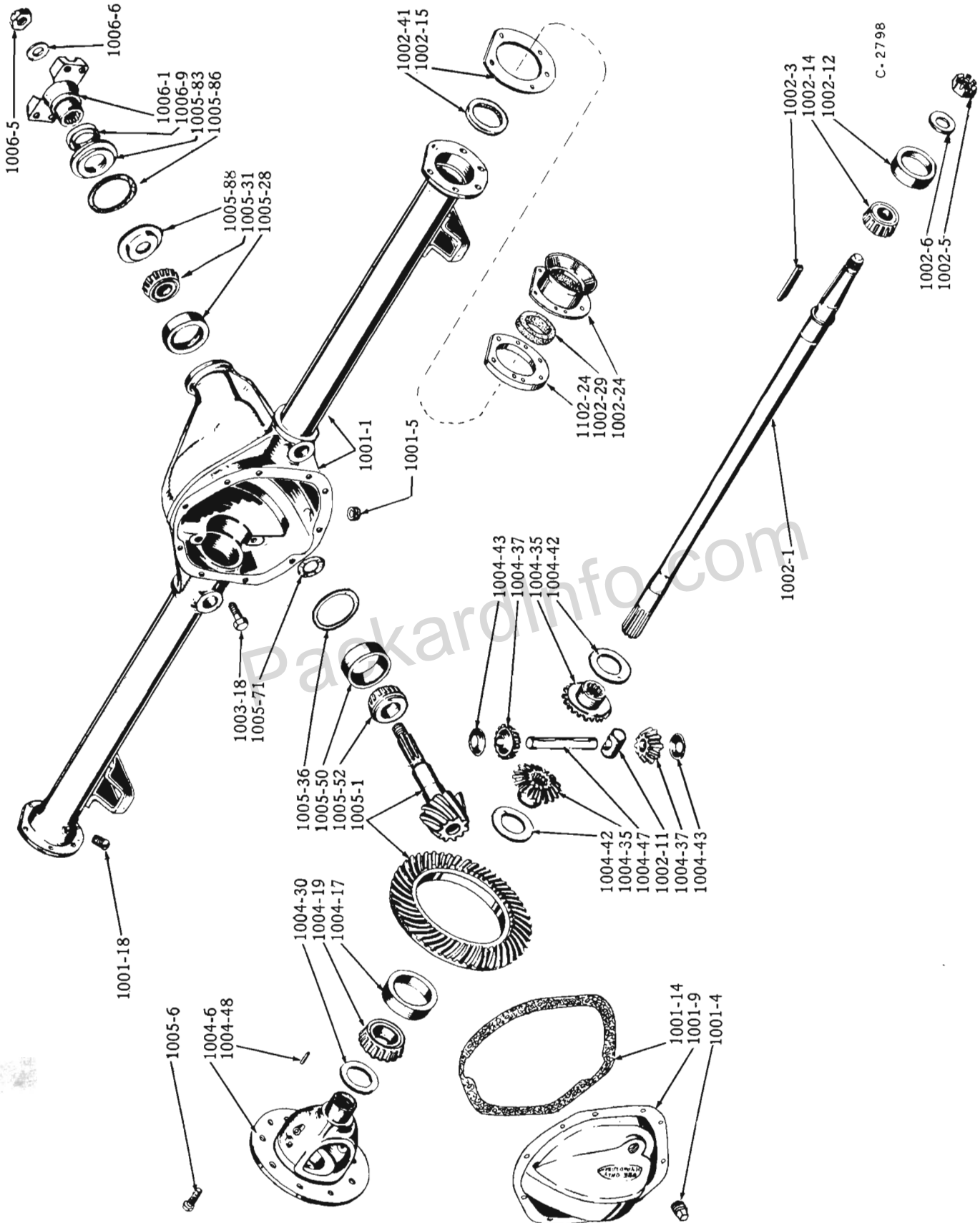
Plate 10-1



REAR AXLE and DIFFERENTIAL - Model 16G, * 16G8, 56G, 57G
(* except D and cars with wrap-around W/S)

Plate 10-2

REAR AXLE



REAR AXLE and DIFFERENTIAL - Models *16G8, 6H, 56B, 56J, 57B, 57H, 57L

(*D only and cars with wrap around w/s.)

ILLUST. NUMBER	PART NUMBER	CHANGE	DESCRIPTION	MODELS	PER CAR
1000- REAR AXLE ASSEMBLIES (Plates 10-1,2)					
REAR AXLE ASSEMBLIES ARE FURNISHED COMPLETE WITH UNIVERSAL JOINT FLANGE, BUT ARE LESS BRAKE BACKING PLATES AND BRAKE SHOES.					
					RATIO
534789	AXLE ASSY., REAR - W/ST.			16G6, 56G, 57G	4.1
534790	AXLE ASSY., REAR - W/OD.			16G6, 56G, 57G	4.56
534796	AXLE ASSY., REAR - W/OD.			16G6, 56G	4.27
534788	AXLE ASSY., REAR - W/AD.			16G6, 56G, 57G	3.54
534790	AXLE ASSY., REAR - W/ST.			16G6, 56G, 57G	4.56
534789	AXLE ASSY., REAR - W/OD. & AD.			16G6, 56G, 57G	4.1
534791	AXLE ASSY., REAR - W/OD.			16G6, 56G, 57G	4.88
534789	AXLE ASSY., REAR - W/ST.	} EXCEPT D	USED	16G8	4.1
535796	AXLE ASSY., REAR - W/OD.			16G8	4.27
534788	AXLE ASSY., REAR - W/AD.			16G8	3.54
532071	AXLE ASSY., REAR - W/ST.			16G8	4.09
1541330	AXLE ASSY., REAR - W/OD.			16G8	4.55
532073	AXLE ASSY., REAR - W/AD.			16G8	3.54
532073	AXLE ASSY., REAR - W/ST.	} EXCEPT D	USED	16G8	3.54
537550	AXLE ASSY., REAR - W/OD. - D			16G8	3.73
536494	AXLE ASSY., REAR - W/OD. - D			16G8	3.92
537558	AXLE ASSY., REAR - W/AD.			16G8	3.31
537584	AXLE ASSY., REAR - W/AD.		ENGINE	16G8	3.07
534790	AXLE ASSY., REAR - W/ST. & OD.	} EXCEPT D	USED	16G8	4.56
535796	AXLE ASSY., REAR - W/ST.			16G8	4.27
534789	AXLE ASSY., REAR - W/OD.			16G8	4.1
1541330	AXLE ASSY., REAR - W/ST.			16G8	4.55
1541329	AXLE ASSY., REAR - W/ST. & OD.			16G8	4.27
537550	AXLE ASSY., REAR - W/ST. & OD.	} EXCEPT D	USED	16G8	3.73
536494	AXLE ASSY., REAR - W/ST. & OD.			16G8	3.92
532073	AXLE ASSY., REAR - W/OD. - D			16G8	3.54
537558	AXLE ASSY., REAR - W/AD.			16G8	3.31
537584	AXLE ASSY., REAR - W/AD.			16G8	3.07
536494	AXLE ASSY., REAR - W/ST.			6H	3.91
1541329	AXLE ASSY., REAR - W/OD.			6H	4.27
532073	AXLE ASSY., REAR - W/AD.			6H	3.54
534807	AXLE ASSY., REAR - W/ST.			6H	4.27
532701	AXLE ASSY., REAR - W/ST. & OD.			6H	4.09
1541330	AXLE ASSY., REAR - W/OD.			6H	4.55
532073	AXLE ASSY., REAR - W/ST.	} NOTE 1		56B, 56H.	3.54
537550	AXLE ASSY., REAR - W/OD.			56B.	3.73
536494	AXLE ASSY., REAR - W/OD.			56B, 56H.	3.92
532071	AXLE ASSY., REAR - W/OD.			56H.	4.09
537558	AXLE ASSY., REAR - W/AD.			56B, 56H.	3.31
1541325	AXLE ASSY., REAR - W/ST.	} NOTE 2		56B, 56H.	3.54
1541325	AXLE ASSY., REAR - W/ST. - EXCEPT K7			57B, 57H.	3.54
1541327	AXLE ASSY., REAR - W/OD.			56B, 56H.	3.92
1541327	AXLE ASSY., REAR - W/OD. - EXCEPT K7			57H, 57L.	3.92
1541328	AXLE ASSY., REAR - W/OD.			56H.	4.09
1541328	AXLE ASSY., REAR - W/OD. - Y			57H.	4.09
1541329	AXLE ASSY., REAR - W/OD. - K7			57H.	4.27
1541324	AXLE ASSY., REAR - W/AD.			56B, 56H, 57B, 57H, 57L.	3.31
1541325	AXLE ASSY., REAR - W/AD. - SPECIAL ORDERS	57L.	3.54		

NOTES

1 - REAR AXLE SHAFT HAS 3 3/4" KEY WAY SLOT (MEASURED FROM END OF SHAFT) USED ON MODEL 56B BEFORE CAR SERIALS - SOUTH BEND 8,436,660 CANADA 8,960,444 MODEL 56H 7,178,036 7,900,839

2 - REAR AXLE SHAFT HAS 4 1/4" KEY WAY SLOT (MEASURED FROM END OF SHAFT) USED ON AND AFTER CAR SERIALS IN NOTE 1.

ILLUST. NUMBER	PART NUMBER	CHANGE	DESCRIPTION	MODELS	PER CAR
1000- REAR AXLE ASSEMBLIES-Cont'd.					
(Plates 10-1,2)					
				RATIO	
1541327	AXLE ASSY., REAR - W/ST.			3.92	56B, 56H. 1
1541327	AXLE ASSY., REAR - W/ST. - EXCEPT K7			3.92	57B, 57H. 1
1541329	AXLE ASSY., REAR - W/OD.			4.27	56B. 1
1541329	AXLE ASSY., REAR - W/OD. - EXCEPT K7			4.27	56B, 57H, 57L. 1
1541328	AXLE ASSY., REAR - W/OD. - EXCEPT Y			4.09	57H. 1
1541326	AXLE ASSY., REAR - W/OD.			3.73	57H. 1
1541327	AXLE ASSY., REAR - W/OD. - K7		} NOTE 2	3.92	57H. 1
1541330	AXLE ASSY., REAR - W/OD. - K7			4.55	57H. 1
1541325	AXLE ASSY., REAR - W/OD.			3.54	56B, 56H, 57B, 57H. 1
1541323	AXLE ASSY., REAR - W/AD.			3.07	56B, 56H, 57B, 57H, 57L. 1
1541330	AXLE ASSY., REAR - W/OD. - SPECIAL ORDERS			4.55	57L. 1
1541327	AXLE ASSY., REAR - W/OD.			3.92	56J. 1
1541323	AXLE ASSY., REAR - W/AD.			3.07	56J. 1
1541325	AXLE ASSY., REAR - W/OD.			3.54	56J. 1
1541326	AXLE ASSY., REAR - W/OD.		3.73	56J. 1	
1541328	AXLE ASSY., REAR - W/OD.		4.09	56J. 1	
1541329	AXLE ASSY., REAR - W/OD.		4.27	56J. 1	
1541330	AXLE ASSY., REAR - W/OD.		4.55	56J. 1	
TWIN TRACTION REAR AXLE - SPECIAL ORDERS					
1543017	◆ AXLE ASSY., REAR - W/AD.		3.07	57B, 57H, 57L. 1	
1543018	◆ AXLE ASSY., REAR - W/AD.		3.31	57B, 57H, 57L. 1	
1543019	◆ AXLE ASSY., REAR - W/ST. & OD.		3.54	57B, 57H. 1	
1543019	◆ AXLE ASSY., REAR - W/AD.		3.54	57L. 1	
1543020	◆ AXLE ASSY., REAR - W/OD.		3.73	57H. 1	
1543021	◆ AXLE ASSY., REAR - W/ST. & OD.		3.92	57B, 57H, 57L. 1	
1543022	◆ AXLE ASSY., REAR - W/OD.		4.09	57H. 1	
1543023	◆ AXLE ASSY., REAR - W/OD.		4.27	57B, 57H, 57L. 1	
1543024	◆ AXLE ASSY., REAR - W/OD. - K7		4.55	57H. 1	
1543024	◆ AXLE ASSY., REAR - W/OD.		4.55	57L. 1	
◆ INCLUDES LUBRICANT					
1001- REAR AXLE HOUSING (Plates 10-1,2)					
REAR AXLE HOUSINGS ARE FURNISHED LESS BRAKE BACKING PLATES AND BRAKE SHOES.					
				USED WITH ENGINE	
1001-1	535118		HOUSING W/CARRIER ASSY., R/A	16G6, 56G, 57G	1
1001-1	535118		HOUSING W/CARRIER ASSY., R/A - EXCEPT D	224" 16G8	1
1001-1	532665		HOUSING W/CARRIER ASSY., R/A - D	224" 16G8	1
1001-1	532665		HOUSING W/CARRIER ASSY., R/A	259" 16G8	1
1001-1	532665		HOUSING W/CARRIER ASSY., R/A	6H, 56B, 56H, 56J, 57B, 57H, 57L	1
1001-4	G103869		PLUG, FILLER, SQUARE HEAD 3/4" PIPE	ALL MODELS	1
1001-5	G143999		PLUG, DRAIN, COUNTER SUNK HEAD 3/4" PIPE	ALL MODELS	1
1001-9	194839		COVER, R/A HOUSING	16G6	1
1001-9	194839		COVER, R/A HOUSING - EXCEPT D	224" 16G8	1
1001-9	530600		COVER, R/A HOUSING - D	224" 16G8	1
1001-9	530600		COVER, R/A HOUSING	259" 16G8	1
1001-9	530600		COVER, R/A HOUSING	6H, 56B, 56H, 56J, 57B, 57H, 57L	1
	512709		SCREW, SHORT 5/16" - 18X3/4"	ALL MODELS	9
	G180078		SCREW, LONG 5/16" - 18X7/8"	ALL MODELS	1
	G120214		WASHER, LOCK 5/16"	ALL MODELS	10

NOTE { 2 - REAR AXLE SHAFT HAS 4 1/4" KEYWAY SLOT (MEASURED FROM END OF SHAFT) USED ON AND AFTER CAR SERIALS SOUTH BEND CANADA MODEL 56B 8,436,660 MODEL 56H 7,178,036 8,960,444 7,900,839

ILLUST. NUMBER	PART NUMBER	CHANGE	DESCRIPTION	MODELS	PER CAR
1001- REAR AXLE HOUSING-Cont'd. (Plates 10-1,2)					
			USED WITH ENGINE		
1001-14	194837		GASKET, R/A HOUSING COVER - PAPER	16G6, 56G, 57G	1
1001-14	194837		GASKET, R/A HOUSING COVER - PAPER - EXCEPT D 224"	16G8	1
1001-14	530570		GASKET, R/A HOUSING COVER - PAPER D 224"	16G8	1
1001-14	530570		GASKET, R/A HOUSING COVER - PAPER 259"	16G8	1
1001-14	530570		GASKET, R/A HOUSING COVER - PAPER	6H, 56B, 56H, 56J, 57B, 57H, 57L	1
1001-18	G103883		GREASE PLUG, R/A SHAFT BEARING 1/8" PIPE	ALL MODELS	2
1002- REAR AXLE SHAFT AND BEARINGS					
(Plates 10-1,2)					
1002-1	532655		SHAFT, R/A	16G6, 56G, 57G	2
1002-1	532655		SHAFT, R/A - EXCEPT D 224"	16G8	2
1002-1	532656		SHAFT, R/A - D 224"	16G8	2
1002-1	532656		SHAFT, R/A 259"	16G8	2
1002-1	532656		SHAFT, R/A - NOTE 1	6H, 56B, 56H, 56J	2
1002-1	1540835		SHAFT, R/A - NOTE 2	56B, 56H, 56J, 57B, 57H, 57L	2
1002-3	194841		KEY, SHAFT TO HUB 1/4" X 2 7/8" - NOTE 3	ALL EXCEPT 56J, 57B, 57H, 57L	2
1002-3	1540834		KEY, SHAFT TO HUB 1/4" X 3" - NOTE 4	56B, 56H, 56J, 57B, 57H, 57L	2
1002-5	510516		NUT, SHAFT TO HUB 7/8" - 14	ALL MODELS	2
1002-6	510518		WASHER, PLAIN 20/32"	ALL MODELS	2
	----		COTTER, 1/8" X 1 1/2"	ALL MODELS	2
1002-11	194854		THRUST BLOCK, R/A SHAFT (INCL. IN 520188 KIT)	16G6, 56G, 57G	1
1002-11	194854		THRUST BLOCK, R/A SHAFT - EXCEPT D (INCL. IN 520188 KIT) 224"	16G8	1
1002-11	530706		THRUST BLOCK, R/A SHAFT - D (INCL. IN 530705 KIT) 224"	16G8	1
1002-11	530706		THRUST BLOCK, R/A SHAFT (INCL. IN 530705 KIT) 259"	16G8	1
1002-11	530706		THRUST BLOCK, R/A SHAFT (INCL. IN 530705 KIT)	6H, 56B, 56H, 56J, 57B, 57H, 57L	1
1002-12	165167		CUP, R/A SHAFT BEARING	ALL MODELS	2
1002-14	530451		CONE AND ROLLERS, R/A SHAFT BEARING	ALL MODELS	2
			THICKNESS		
1002-15	194843		SHIM, R/A SHAFT BEARING ADJUSTING003	16G, 6H	*
1002-15	194844		SHIM, R/A SHAFT BEARING ADJUSTING005	ALL MODELS	*
1002-15	194845		SHIM, R/A SHAFT BEARING ADJUSTING010	ALL MODELS	*
1002-15	194846		SHIM, R/A SHAFT BEARING ADJUSTING030	ALL MODELS	*
1002-15	1539920		SHIM, R/A SHAFT BEARING ADJUSTING057-.063	ALL MODELS	*
1002-24	533161		WASHER AND RETAINER, OUTER, R/A SHAFT BEARING OIL SEAL/OR	ALL MODELS	2
1002-29	197216		WASHER, OUTER - R/A SHAFT BEARING OIL - FELT	ALL MODELS	2
1002-31	197436		GASKET, R/A SHAFT OUTER RETAINER AND REINFORCEMENT PLATE-PAPER	ALL MODELS	4
1002-41	530573		OIL SEAL, INNER - R/A SHAFT - LEATHER	ALL MODELS	2

- NOTES
- 1 - REAR AXLE SHAFT HAS 3 3/4" KEYWAY SLOT
(MEASURED FROM END OF SHAFT) USED ON MODEL 56B BEFORE CAR SERIALS - SOUTH BEND 8,436,660 MODEL 56H 7,178,036
CANADA 8,960,444 7,900,839
 - 2 - REAR AXLE SHAFT HAS 4 1/4" KEYWAY SLOT
(MEASURED FROM END OF SHAFT) USED ON AND AFTER CAR SERIALS IN NOTE 1.
 - 3 - REAR AXLE SHAFT KEY 2 3/8" LONG USED ON MODEL 56B BEFORE CAR SERIALS - SOUTH BEND 8,436,660 MODEL 56H 7,178,036
CANADA 8,960,444 7,900,839
 - 4 - REAR AXLE SHAFT KEY 3" LONG USED ON AND AFTER CAR SERIALS IN NOTE 3.
 - * - USE AS REQUIRED.
 - - NOT USED WITH POWER-LOK DIFF.

ILLUST. NUMBER	PART NUMBER	CHANGE	DESCRIPTION	MODELS	PER CAR
1003- DIFFERENTIAL CARRIER (Plates 10-1, 2)					
	----		CARRIER, DIFFERENTIAL - INTEGRAL WITH AXLE HOUSING	ALL MODELS	1
1003-18	510724		SCREW, DIFFERENTIAL CARRIER BEARING CAP 1/2" - 13X2 1/4"	ALL MODELS	4
1004- DIFFERENTIAL CASE AND BEARINGS (Plates 10-1, 2)					
			RATIO		
1543015	●†CASE ASSY., DIFF.	} TWIN TRAC-	3.92, 4.09, 4.27, 4.55.	57B, 57H, 57L	1
1543016	●†CASE ASSY., DIFF.		3.07, 3.31, 3.54, 3.73.	57B, 57H, 57L	1
			● INCLUDES DIFF. CASE ASSY & LUBRICANT KIT		
			† INTERNAL PARTS NOT SOLD SEPERATELY		
			USED WITH ENGINE		
1004-6	196313		CASE, DIFF. 4.1, 4.27, 4.56, 4.88	16G6, 56G, 57G	1
1004-6	529399		CASE, DIFF. 3.54	16G6, 56G, 57G	1
1004-6	196313	} EXCEPT D	CASE, DIFF. 4.1, 4.27, 4.56 224"	16G8	1
1004-6	529399		CASE, DIFF. 3.54 224"	16G8	1
1004-6	530702	} D	CASE, DIFF. 4.09, 4.27, 4.56 224"	16G8	1
1004-6	530703		CASE, DIFF. 3.54 224"	16G8	1
1004-6	530702		CASE, DIFF. 3.92, 4.27, 4.55, 4.56, 4.09 259"	16G8	1
1004-6	530703		CASE, DIFF. 3.07, 3.31, 3.54, 3.73 259"	16G8	1
1004-6	530702	■	CASE, DIFF. 3.92, 4.09, 4.27, 4.55	6H, 56B, 56H, 56J, 57B, 57H, 57L	1
1004-6	530703	■	CASE, DIFF. 3.07, 3.31, 3.54, 3.73	6H, 56B, 56H, 56J, 57B, 57H, 57L	1
1004-17	196286		CUP, DIFF. BEARING	16G6, 56G, 57G	2
1004-17	196286		CUP, DIFF. BEARING - EXCEPT D 224"	16G8	2
1004-17	190047		CUP, DIFF. BEARING - D 224"	16G8	2
1004-17	190047		CUP, DIFF. BEARING 259"	16G8	2
1004-17	190047		CUP, DIFF. BEARING	6H, 56B, 56H, 56J, 57B, 57H, 57L	2
1004-19	196287		CONE AND ROLLERS, DIFF. BEARING	16G6, 56G, 57G	2
1004-19	196287		CONE AND ROLLERS, DIFF. BEARING - EXCEPT D 224"	16G8	2
1004-19	190048		CONE AND ROLLERS, DIFF. BEARING - D 224"	16G8	2
1004-19	190048		CONE AND ROLLERS, DIFF. BEARING 259"	16G8	2
1004-19	190048		CONE AND ROLLERS, DIFF. BEARING	6H, 56B, 56H, 56J, 57B, 57H, 57L	2
			THICKNESS		
1004-30	510717		SHIM, DIFF. BEARING ADJUSTING003	ALL MODELS	*
1004-30	510718		SHIM, DIFF. BEARING ADJUSTING005	ALL MODELS	*
1004-30	510719		SHIM, DIFF. BEARING ADJUSTING010	ALL MODELS	*
1004-30	510720		SHIM, DIFF. BEARING ADJUSTING030	ALL MODELS	*
	520188		GEAR AND PINION KIT, DIFF. SIDE BEVEL	16G6, 56G, 57G	1
	520188		GEAR AND PINION KIT, DIFF. SIDE BEVEL - EXCEPT D 224"	16G8	1
			520188 KIT CONSISTS OF:		
			2- ---- PINION 1-194854 THRUST BLOCK		
			2- ---- GEAR 1-194835 SHAFT		
			2-194838 THRUST WASHER 1-510722 PIN		
			2-194836 THRUST WASHER		
	530705		GEAR AND PINION KIT, DIFF. SIDE BEVEL - D 224"	16G8	1
	530705		GEAR AND PINION KIT, DIFF. SIDE BEVEL 259"	16G8	1
	530705	■	GEAR AND PINION KIT, DIFF. SIDE BEVEL	6H, 56B, 56H, 56J, 57B, 57H, 57L	1
			530705 KIT CONSISTS OF:		
			2- ---- PINION 1-530706 THRUST BLOCK		
			2- ---- GEAR 1-510721 SHAFT		
			2-511678 THRUST WASHER 1-510722 PIN		
			2-511679 THRUST WASHER		

NOTES { * - USE AS REQUIRED.
 ■ - NOT USED WITH POWER-LOK DIFF.

ILLUST. NUMBER	PART NUMBER	CHANGE	DESCRIPTION	MODELS	PER CAR	
1004- DIFFERENTIAL CASE AND BEARINGS-Cont'd.						
(Plates 10-1, 2)						
1004-35	----		GEAR, DIFF. SIDE BEVEL (FURNISHED ONLY IN 520188 OR 530705 KIT)	ALL MODELS	2	
1004-37	----		PINION, DIFF. (FURNISHED ONLY IN 520188 OR 530705 KIT)	ALL MODELS	2	
				INCL. IN KIT	USED WITH ENGINE	
1004-42	194838		THRUST WASHER, SIDE BEVEL GEAR	520188	16G6, 56G, 57G	2
1004-42	194838		THRUST WASHER, SIDE BEVEL GEAR-EXCEPT D	520188 224"	16G8	2
1004-42	511678		THRUST WASHER, SIDE BEVEL GEAR-D	530705 224"	16G8	2
1004-42	511678		THRUST WASHER, SIDE BEVEL GEAR	530705 259"	16G8	2
1004-42	511678	■	THRUST WASHER, SIDE BEVEL GEAR	530705	6H, 56B, 56H, 56J, 57B, 57H, 57L	2
1004-43	194836		THRUST WASHER, DIFF. PINION	520188	16G6, 56G, 57G	2
1004-43	194836		THRUST WASHER, DIFF. PINION - EXCEPT D	520188 224"	16G8	2
1004-43	511679		THRUST WASHER, DIFF. PINION - D	530705 224"	16G8	2
1004-43	511679		THRUST WASHER, DIFF. PINION	530705 259"	16G8	2
1004-43	511679	■	THRUST WASHER, DIFF. PINION	530705	6H, 56B, 56H, 56J, 57B, 57H, 57L	2
1004-47	194835		SHAFT, DIFF. PINION	520188	16G6, 56G, 57G	1
1004-47	194835		SHAFT, DIFF. PINION - EXCEPT D	520188 224"	16G8	1
1004-47	510721		SHAFT, DIFF. PINION - D	530705 224"	16G8	1
1004-47	510721		SHAFT, DIFF. PINION	530705 259"	16G8	1
1004-47	510721	■	SHAFT, DIFF. PINION	530705	6H, 56B, 56H, 56J, 57B, 57H, 57L	1
1004-48	510722	■	PIN, DIFF. PINION SHAFT LOCKING 520188-530705		ALL MODELS	1
1005- REAR AXLE BEVEL DRIVE GEAR, PINION AND BEARINGS						
(Plates 10-1, 2)						
THE RATIO MARKING IS STAMPED ON EACH GEAR AND PINION TO INSURE MORE SATISFACTORY PERFORMANCE ONLY MATCHED GEARS AND PINIONS ARE FURNISHED.						
				RATIO	USED WITH ENGINE	
1005-1	516455		GEAR AND PINION, R/A - w/ST.	4.1	16G6, 56G, 57G	1
1005-1	194850		GEAR AND PINION, R/A - w/OD.	4.56	16G6, 56G, 57G	1
1005-1	535797		GEAR AND PINION, R/A - w/OD.	4.27	16G6	1
1005-1	529395		GEAR AND PINION, R/A - w/AD.	3.54	16G6, 56G, 57G	1
1005-1	194850		GEAR AND PINION, R/A - w/ST.	4.56	16G6, 56G, 57G	1
1005-1	516455		GEAR AND PINION, R/A - w/OD.	SPECIAL ORDERS 4.1	16G6, 56G, 57G	1
1005-1	527703		GEAR AND PINION, R/A - w/OD.		4.88	16G6, 56G, 57G
1005-1	516455		GEAR AND PINION, R/A - w/AD.	4.1	16G6, 56G, 57G	1
1005-1	516455		GEAR AND PINION, R/A - w/ST.	4.1	16G8	1
1005-1	535797		GEAR AND PINION, R/A - w/OD.	EXCEPT D 4.27		16G8
1005-1	529395		GEAR AND PINION, R/A - w/AD.	3.54	16G8	1
1005-1	530496		GEAR AND PINION, R/A - w/ST.	4.09	16G8	1
1005-1	531156		GEAR AND PINION, R/A - w/OD.	D 4.55	16G8	1
1005-1	530569		GEAR AND PINION, R/A - w/AD.		3.54	16G8
1005-1	194850		GEAR AND PINION, R/A - w/ST.	EXCEPT D 4.56	16G8	1
1005-1	535797		GEAR AND PINION, R/A - w/ST.		SPECIAL 4.27	16G8
1005-1	516455		GEAR AND PINION, R/A - w/OD.	ORDERS 4.1	16G8	1
1005-1	531156		GEAR AND PINION, R/A - w/ST.	D SPECIAL 4.55	16G8	1
1005-1	535391		GEAR AND PINION, R/A - w/OD.		ORDERS 4.27	16G8
1005-1	530569		GEAR AND PINION, R/A - w/ST.	3.54	16G8	1
1005-1	537634		GEAR AND PINION, R/A - w/OD.	EXCEPT D 3.73	16G8	1
1005-1	536495		GEAR AND PINION, R/A - w/OD. - D		3.92	16G8
1005-1	537637		GEAR AND PINION, R/A - w/AD.			
				EXCEPT W2-F2 3.31	16G8	1
1005-1	537876		GEAR AND PINION, R/A - w/AD. - W2-F2 3.07		16G8	1

NOTE { ■ - NOT USED WITH POWER-LOK DIFF.

ILLUST. NUMBER	PART NUMBER	CHANGE	DESCRIPTION	RATIO		MODELS	PER CAR
		✓					
1005- REAR AXLE BEVEL DRIVE GEAR, PINION AND BEARINGS-Cont'd. (Plates 10-1, 2)							
					USED WITH ENGINE		
1005-1	537634		GEAR AND PINION, R/A - w/ST. & OD.	}	3.73	259"	16G8 1
1005-1	536495		GEAR AND PINION, R/A - w/ST. & OD.		3.92	259"	16G8 1
1005-1	530569		GEAR AND PINION, R/A - w/OD. - EXCEPT D	} SPECIAL ORDERS	3.54	259"	16G8 1
1005-1	537637		GEAR AND PINION, R/A - w/AD. - W2-F2		3.31	259"	16G8 1
1005-1	537876		GEAR AND PINION, R/A - w/AD. - EXCEPT W2-F2	}	3.07	259"	16G8 1
1005-1	536495		GEAR AND PINION, R/A - w/ST.		3.92		6H 1
1005-1	535391		GEAR AND PINION, R/A - w/OD.	4.27		6H 1	
1005-1	530569		GEAR AND PINION, R/A - w/AD.	3.54		6H 1	
1005-1	535391		GEAR AND PINION, R/A - w/ST.	4.27		6H 1	
1005-1	530496		GEAR AND PINION, R/A - w/ST. & OD.	} SPECIAL ORDERS	4.09		6H 1
1005-1	531156		GEAR AND PINION, R/A - w/OD.		4.55		6H 1
1005-1	537634		GEAR AND PINION, R/A - w/OD.	3.73		56B. 1	
1005-1	530569		GEAR AND PINION, R/A - w/ST.	3.54		56B, 56H, 57B, 57H, 57L. 1	
1005-1	536495		GEAR AND PINION, R/A - w/OD.	3.92		56B, 56H, 57B, 57H, 57L. 1	
1005-1	530496		GEAR AND PINION, R/A - w/OD.	4.09		56H, 57B, 57H. 1	
1005-1	537637		GEAR AND PINION, R/A - w/AD.	3.31		56B, 56H, 57B, 57H, 57L. 1	
1005-1	536495		GEAR AND PINION, R/A - w/ST.	3.92		56B, 56H, 57B, 57H, 57L. 1	
1005-1	530569		GEAR AND PINION, R/A - w/OD.	3.54		56B, 56H, 57B, 57H, 57L. 1	
1005-1	535391		GEAR AND PINION, R/A - w/OD.	} SPECIAL ORDERS	4.27		56B, 57B, 57H, 57L. 1
1005-1	537634		GEAR AND PINION, R/A - w/OD.		3.73		57H. 1
1005-1	531156		GEAR AND PINION, R/A - w/OD. - K7	4.55		57H, 57L. 1	
1005-1	537876		GEAR AND PINION, R/A - w/AD.	3.07		56B, 56H, 57B, 57H, 57L. 1	
1005-1	536495		GEAR AND PINION, R/A - w/OD.	3.92		56J. 1	
1005-1	537876		GEAR AND PINION, R/A - w/AD.	3.07		56J. 1	
1005-1	530569		GEAR AND PINION, R/A - w/OD.	3.54		56J. 1	
1005-1	537634		GEAR AND PINION, R/A - w/OD.	} SPECIAL ORDERS	3.73		56J. 1
1005-1	530496		GEAR AND PINION, R/A - w/OD.		4.09		56J. 1
1005-1	535391		GEAR AND PINION, R/A - w/OD.	4.27		56J. 1	
1005-1	531156		GEAR AND PINION, R/A - w/OD.	4.55		56J. 1	
1005-6	527171		SCREW, TO CASE 3/8"-24X15/16"			16G6, 56G, 57G 8	
1005-6	527171		SCREW, TO CASE 3/8"-24X15/16" - EXCEPT D	224"		16G8 8	
1005-6	527171		SCREW, TO CASE 3/8"-24X15/16" - D	224"		16G8 10	
1005-6	527171		SCREW, TO CASE 3/8"-24X15/16"	259"		16G8 10	
1005-6	527171		SCREW, TO CASE 3/8"-24X15/16"			6H, 56B, 56H, 56J, 57B, 57H, 57L 10	
1005-28	190032		CUP, FRONT, R/A PINION BEARING			ALL MODELS 1	
1005-31	190033		CONE AND ROLLERS, FRONT - R/A - PINION BEARING THICKNESS			ALL MODELS 1	
1005-36	511652		SHIM, R/A - PINION ADJUSTING003			ALL MODELS *	
1005-36	511653		SHIM, R/A - PINION ADJUSTING005			ALL MODELS *	
1005-36	511654		SHIM, R/A - PINION ADJUSTING010			ALL MODELS *	
1005-50	190035		CUP, REAR, R/A - PINION BEARING			ALL MODELS 1	
1005-52	190036		CONE AND ROLLERS, REAR - R/A PINION BEARING			ALL MODELS 1	
1005-71	190038		SHIM, R/A - PINION BEARING ADJUSTING003			ALL MODELS *	
1005-71	190039		SHIM, R/A - PINION BEARING ADJUSTING005			ALL MODELS *	
1005-71	190040		SHIM, R/A - PINION BEARING ADJUSTING010			ALL MODELS *	
1005-71	190041		SHIM, R/A - PINION BEARING ADJUSTING030			ALL MODELS *	
1005-83	199379		OIL SEAL, R/A PINION BEARING - LEATHER			ALL MODELS 1	

NOTE { * - USE AS REQUIRED.

ILLUST. NUMBER	PART NUMBER	CHANGE	DESCRIPTION	MODELS	PER CAR
1005- REAR AXLE BEVEL DRIVE GEAR, PINION AND BEARINGS-Cont'd. (Plates 10-1,2)					
1005-86	184161		GASKET, R/A PINION BEARING OIL SEAL - PAPER	ALL MODELS	1
			USED WITH ENGINE		
1005-88	510709		SLINGER, R/A PINION BEARING OIL	16G6,56G,57G	1
1005-88	510709		SLINGER, R/A PINION BEARING OIL - EXCEPT D	16G8	1
			224"	16G8	1
1005-88	530571		SLINGER, R/A PINION BEARING OIL - D	16G8	1
1005-88	530571		SLINGER, R/A PINION BEARING OIL	16G8	1
1005-88	537678		SLINGER, R/A PINION BEARING OIL	6H,56B,56H,56J,57B,57H,57L	1
	530689		WASHER, R/A PINION OIL SLINGER WICK/OR FELT - D	} NOTE 5	16G8
	530689		WASHER, R/A PINION OIL SLINGER WICK/OR FELT		259"
1006- REAR AXLE UNIVERSAL JOINT FLANGE (Plates 10-1,2)					
1006-1	521825		FLANGE w/COVER, R/A UNIVERSAL JOINT	ALL MODELS	1
1006-5	527432		NUT, TO PINION HEX. 3/4"-16	ALL MODELS	1
1006-6	196965		WASHER, PLAIN 25/32"	ALL MODELS	1
1006-9	510934		COVER, R/A UNIVERSAL JOINT FLANGE DUST.	ALL MODELS	1

PackardInfo.com

NOTE {	5 - DISCONTINUED ON MODELS	16G8	6H
	SO. BEND	8,397,201	7,155,401
	LOS ANGELES	8,843,001	7,805,901
	CANADA	8,957,601	7,900,201

MEMORANDA

PackardInfo.com

IMPORTANT

To assure prompt shipment of parts, always give

Car Serial and **Engine Number**

L. H. C. - Left hand drive only

R. H. C. - Right hand drive only